

Virtual VSIG JC: An Interesting Case

3.25.21

Erin K. Greenleaf, MD MSc
Washington University in St. Louis
Department of Surgery
Section of Vascular Surgery

BARNES  JEWISH
Hospital
BJC HealthCare

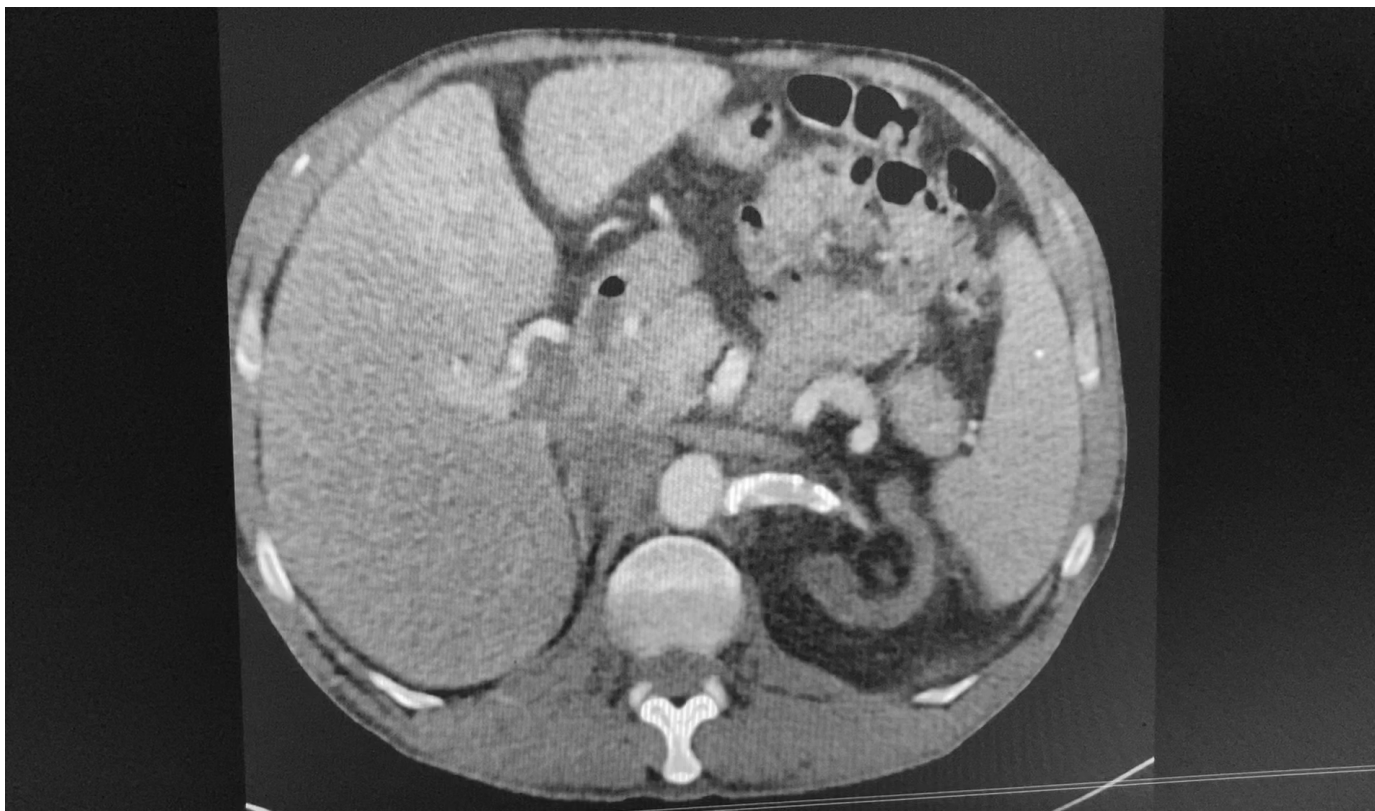
 Washington[®]
University in St. Louis
SCHOOL OF MEDICINE

NATIONAL LEADERS IN MEDICINE

Patient JC

60yo M presenting with progressively enlarging lower abdominal mass associated with a partial bowel obstruction, outflow obstruction of his transplant kidney, and bilateral lower extremity swelling.

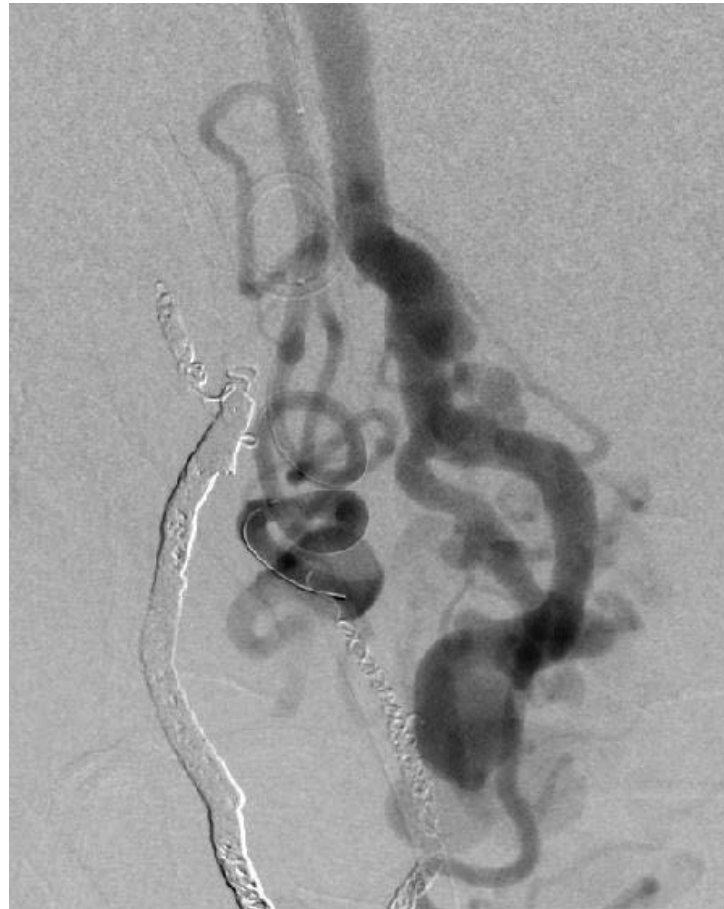
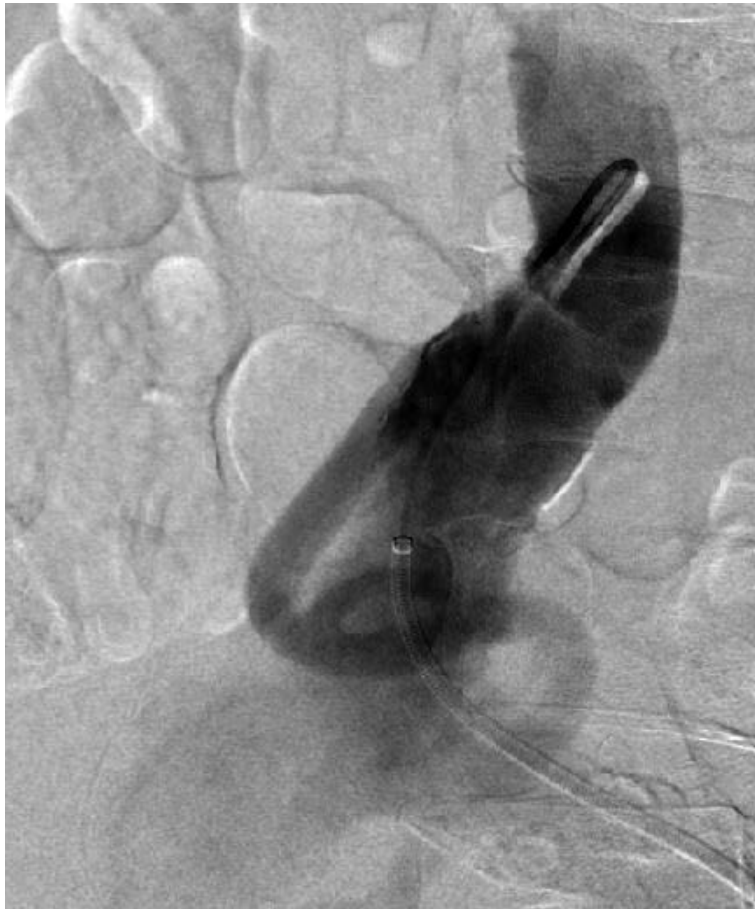
Preoperative Imaging



Operative Procedure



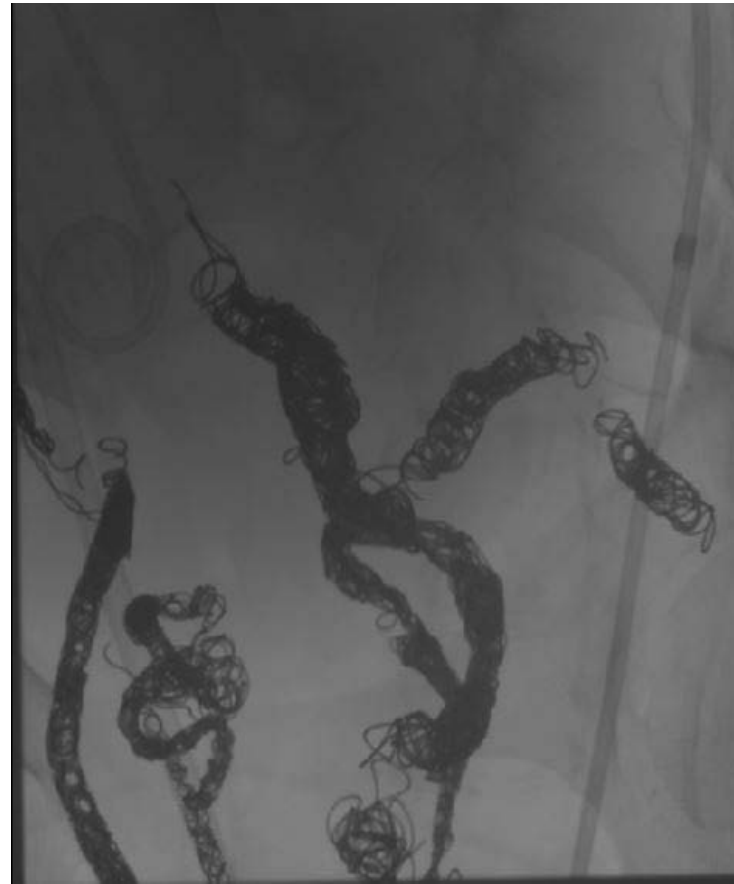
Operative Procedure



Operative Procedure



Operative Procedure



Operative Procedure

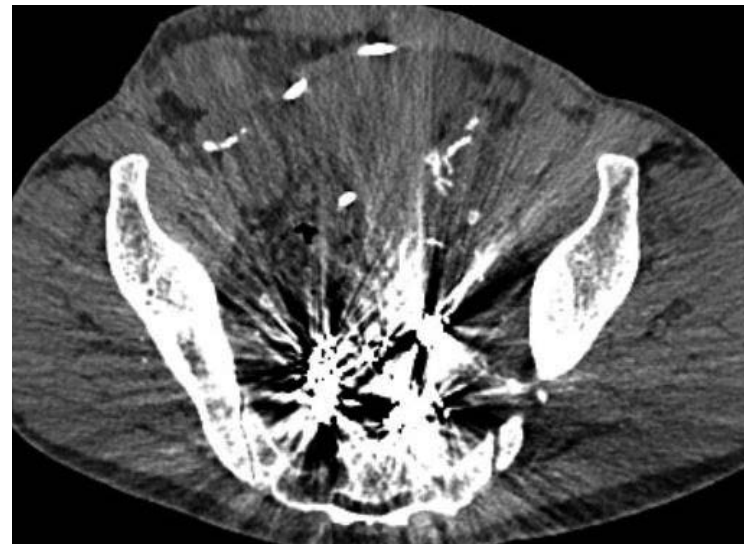


Operative Procedure

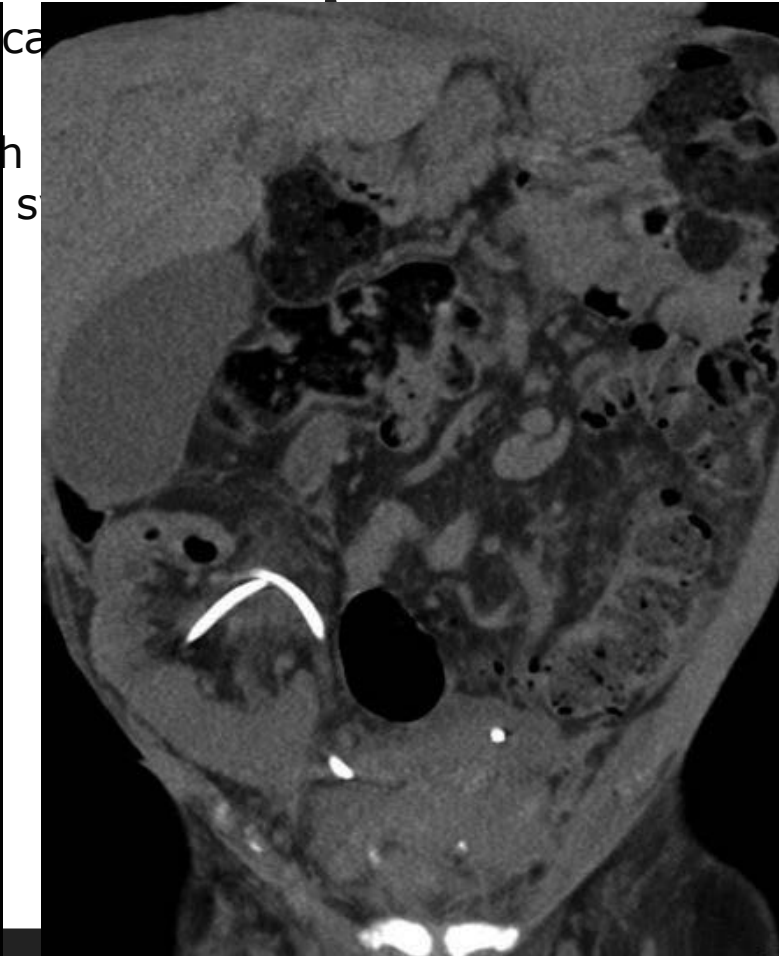
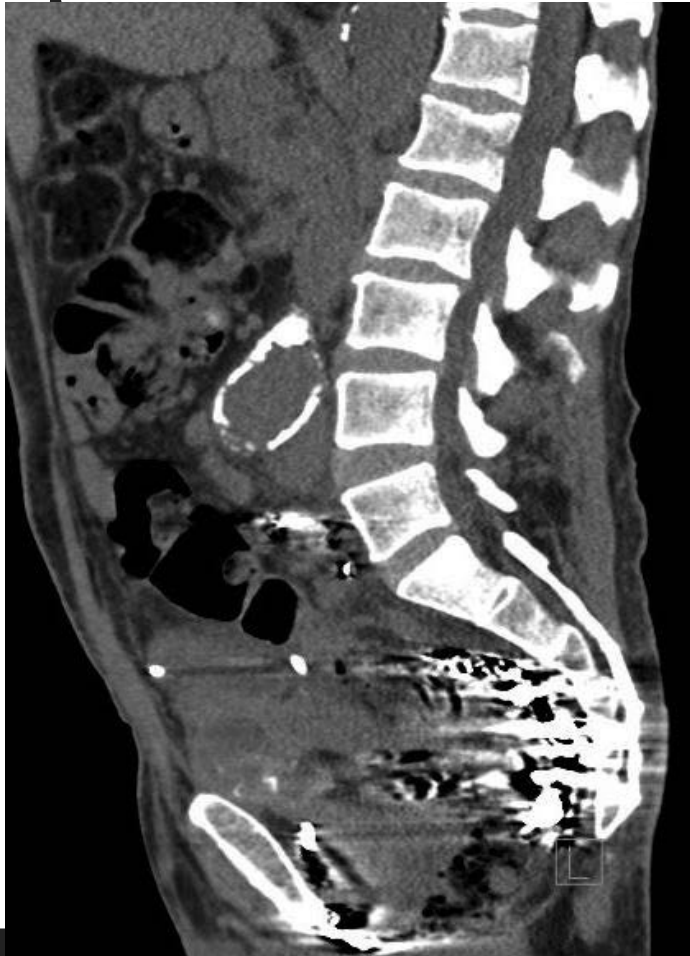


Postoperative Course & Follow-up

- Recovered without complication and discharged to home one week later
- Outpatient visit one month later, recovering well and with resolution of preoperative symptoms



Postoperative Course & Follow-up



Virtual VSIG JC: An Interesting Case

Erin K. Greenleaf, MD MSc
ekgreenleaf@wustl.edu

BARNES JEWISH
Hospital
BJC HealthCare

 **Washington**[®]
University in St. Louis
SCHOOL OF MEDICINE

NATIONAL LEADERS IN MEDICINE